



Middle TN Commercial
Real Estate Experts:



JP Powell
Managing Broker
c 615.533.5682
o 615.824.7072

jpowell@southeasterncommercial.net



Mark McDaniel
Commercial Property
Manager/Affiliate Broker
c 615.456.2771
o 615.824.7072

mmcdaniel@southeasterncommercial.net



www.SoutheasternCommercial.net

FOR LEASE



132 Maple Row, Hendersonville, TN 37075
Building 5

Lease Rate: \$18.00/sf NNN

CAM: \$4.00/sf

Available Space: up to 7,112 sf

Located just off of Indian Lake Road in the Maple Row Professional Park, in the heart of Hendersonville. Minutes from restaurants and shopping.

- 972 - 7,112 sf offices available
- Park at your front door!
- Ample parking for visitors
- Connection to the new Kroger parking lot
- Convenient Hendersonville location, without the traffic of being directly on Indian Lake
- Build out options available

Demographics:

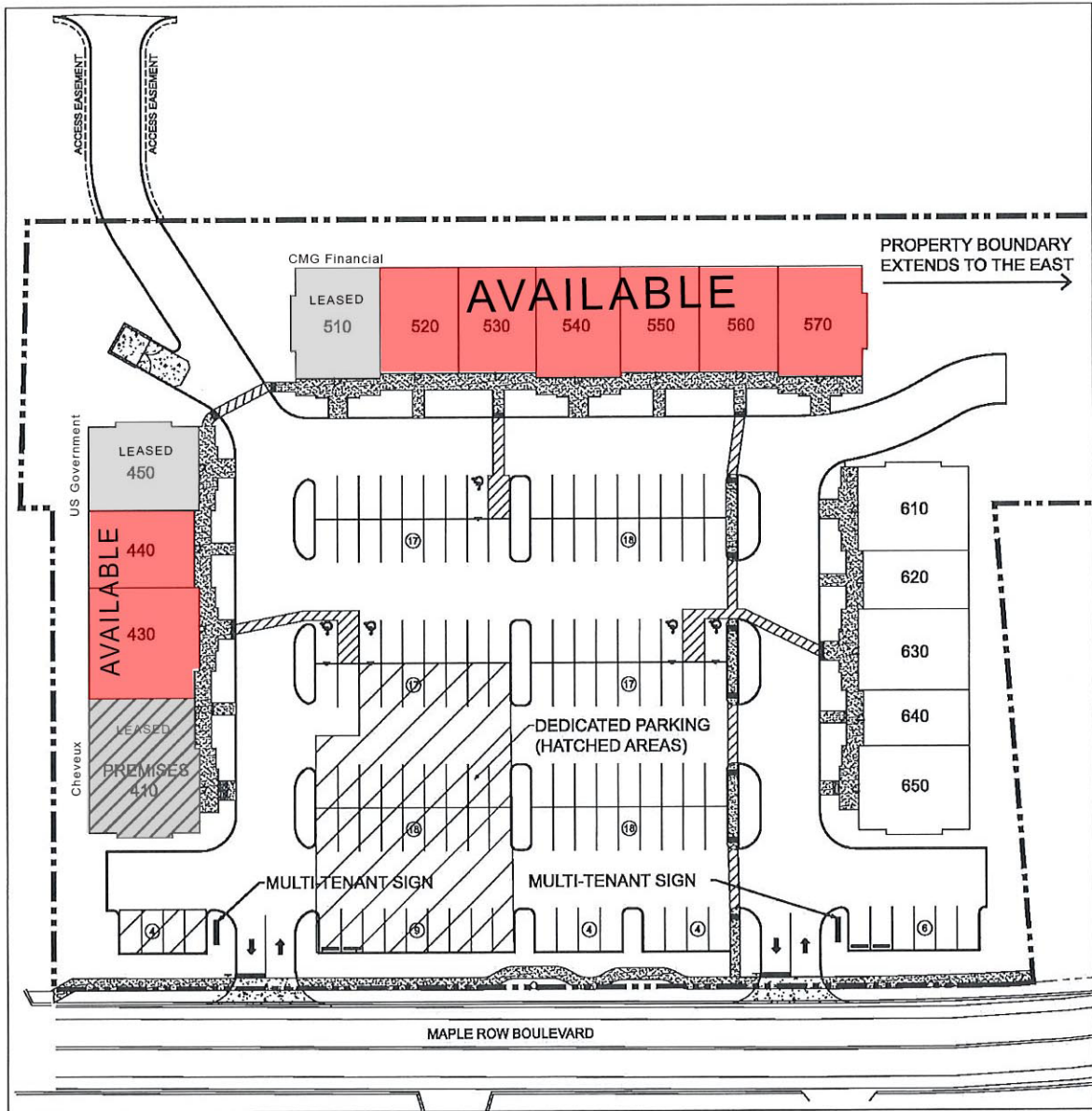
	1 mile	3 mile	5 mile
• Population	6,229	46,289	85,214
• Households	2,487	18,521	33,451
• Avg HH Income	\$60,029	\$63,197	\$69,811

Demographic source: costar.com

Indian Lake Boulevard AADT: 30,000+ cars per day

- County: Sumner
- MSA: Nashville-Davidson-Sumner, TN

*The information contained herein has been given to us by the owner of the property or other sources we deem reliable. We have no reason to doubt its accuracy, but we do not guarantee it. All Information should be verified prior to purchase or lease.



Currently Leased in building 5:
Suite 510 (+/- Suite 520)



Southeastern Commercial Properties is a full service real estate firm. From retail, office and Industrial leasing, sales and build to suit, to land and entitlement consulting, we can get any job done.

Real Estate Services

- Acquisition and disposition services for Raw Land, Distressed Properties, For Lease, and For Sale Properties, Tenant Representation, Transaction Management and Lease Administration.

Construction:

- Tenant buildouts Concept to completion, we Design and Build Commercial Office Buildings and Retail Strip Centers. Repositioning of Assets and Master Planning of Communities.

"We'll help you find the right place, and we'll make sure that it fits your business and budget."